



The Falcon F110 is a stand alone monitoring appliance that provides dynamic, real-time temperature, humidity and dry contact monitoring of computer rooms, data centers, and any critical environment. The F110 accepts up to three temperature (F110-TS) or temperature/humidity (F110-THS) sensors connected with an RJ-11 type connector. Common signals monitored in addition to temperature, humidity and alarms from critical equipment include: power monitoring, water sensors, smoke and fire alarms, motion detectors, airflow and access/entry sensors.

The F110 allows for advanced notification via email, SMS, and SNMP traps at specified temperature and humidity thresholds or the change of status of a digital dry contact signal. These alerts give early warning of conditions that may be dangerous to the equipment in the environments that are being monitored. Direct notification will help your staff stay ahead of the potential problems that cause costly downtime.

The F110 makes Building Management System (BMS) integration simple by responding to Modbus requests. Alarm, temperature, humidity, and dry contact information is all available via the Modbus protocol over TCP/IP. The F110 can also be easily incorporated into Network Management Systems (NMS) via the SNMP protocol. SNMP gets, sets, and traps keep your NMS staff informed of important factors in their critical environments.

The F110 is an affordable solution for facilities that need to track important factors and notify the right people of potential problems, in turn improving the uptime of important equipment.

F110 Accessories

- F110-TS: Temperature sensor, RJ-11 connector, 25ft (7.62m) cable included (max. distance 100ft/30.48m)
- F110-THS: Temperature/humidity sensor RJ-11 connector, 25ft (7.62m) cable included (max. distance 100ft/30.48m)
- F110-RMB: Rack mount bracket for installation in a 19in (.48m) rack

Key Features & Benefits

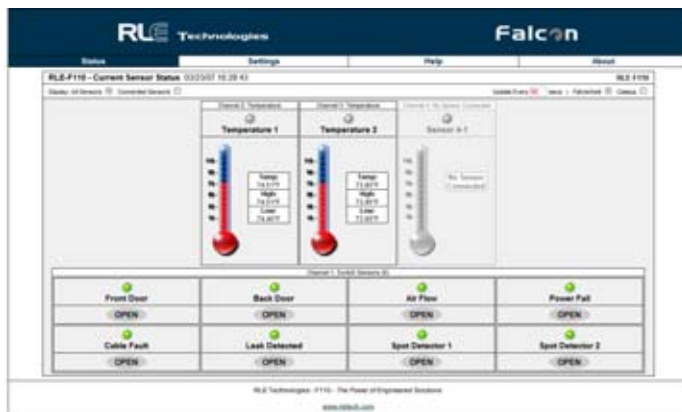
- Easy Ethernet plug-and-play (PnP) setup for remote monitoring of temperature, humidity and digital dry contact
- Accommodates 8 dry contact inputs and 3 optional pre-integrated temperature/humidity sensors
- Notification of alarms via email, SMS, SNMP traps, and web page (HTML) views
- Capable to interface to BMS via Modbus over TCP/IP
- Built-in web server to view integrated inputs
- Real-time monitoring, logging, advanced notifications, and customized thresholds
- RoHS compliant

Specifications

Power Wall Adapter Input	5VDC @ 800mA max.; wall adaptor included 110/240VAC 50/60Hz
Inputs Temperature/Humidity Digital (Dry Contact) Input Cable Length	3 Digital temperature or digital temperature/humidity sensor inputs; plug-and-play; configurable alarm points 8 Digital alarm points (configurable) / Dry contacts (gold/Au clad) 25ft (7.62m) standard; maximum length up to 100ft (30.48m)
Communications Ports Ethernet	10/100 BaseT, RJ45 connector; DHCP enabled (default); Static IP-addressable
Protocols TCP/IP; NTP; HTTP/HTML; Telnet SNMP SMTP (email) Modbus (TCP/IP)	IPv4.0 1.1/4.0 V1; NMS manageable with Get, and Traps; V2c- Traps or Informs SMTP authentication; SMTP relay Modbus slave; TCP/IP transmission protocol
Alarm Notification Email SNMP Traps	1 Email field (for one or multiple recipients); email sent on alarm; alarms notify email recipients; regular email, distribution list, or email-to-SMS accepted 1 Community string with up to 3 manager IP addresses
Login Security Web Browser Access	1 Universal web password for administrator access
Front Panel Interface LED Indicators	Power: 1 green; Network Link: 1 green; Network Activity: 1 amber
Operating Environment Temperature Humidity Altitude	-40°F to 185°F (-40°C to 85°C) 5% to 85% RH, non-condensing 15,000ft (4,572m) max.
Storage Environment	-40°F to 185°F (-40°C to 85°C)
Dimensions Box Enclosure Rack Mount - Optional	4.56"W x 1.25"H x 2.25"D (115.8mmW x 31.75mmH x 57.15mmD) 19.0"W x 1.75"H x 3.75"D (482.6mmW x 44.45mmH x 95.25mmD)
Weight Box Enclosure Rack Mount - Optional	10 oz. (283g) 20 oz. (567g)
Mounting	Rack mount (brackets required): F110-RMB rack mount brackets (not included)
Temperature Sensor - Optional	F110-TS (optional); includes 25ft (7.62m) leader cable with RJ-11 connector (100ft/30.48m distance max.) Range: -67°F to 127°F (-55°C to 52°C)
Temperature/Humidity Sensor - Optional	F110-THS (optional); includes 25ft (7.62m) leader cable with RJ-11 connector (100ft/30.48m distance max.) Range: -67°F to 127°F (-55°C to 52°C)
Certifications	CE; UL STD 17DU E248122; EN STD 5502; ICES-003 Issue 4; FCC 47 CFR Part 15; VCCI; AS/NZS CISPR 22; EN 61326



Sensor Status Screen



The F110 Sensor Status Screen is available through the built-in web server and shows the current status of the attached sensors. If high and low alert thresholds are defined for the temperature or temperature/humidity sensors, the status icon above the sensor label changes color based upon where the temperature or humidity is in relation to the established high and low thresholds. The 'Status' screen also displays the current status of any switch sensors connected to the F110 box.



©2008 RLE Technologies 10055 Rev 1.2 (07/2008)



FORT COLLINS CO
970 484-6510
970 484-6650 FAX
WWW.RLETECH.COM

Although the information contained in this document is believed to be accurate and correct, RLE Technologies assumes no responsibility, and disclaims all liability, for any damages resulting from the use of this information or any error or omission in this document. RLE Technologies does not warrant, guarantee, or make any representations as to the performance, fitness for use, safety, or reliability of any existing or future wiring, equipment, additions or modifications to equipment, or any other component of the original or modified system. Specifications are subject to change without notice.